

## 16 function digital gauge cluster for car/RV/boat

Tach, Temp, Volt, Fuel, Oil, RPM, MPH, Amps, and more



- 8 user configurable instrument panels
- Huge 5" X 3.5" GRAPHIC LCD display
- COMPACT 7" X 6" X 1.55" sealed aluminum enclosure
- Works with most existing senders
- Min/Max alarms for all inputs
- Cascade units for up to 16 functions
- Remote Control and display on PC/PDA included
- PC/PDA data logging included
- Field upgradeable
- Only 1.55" thick - easily fits into dash

Ideal as marine and boat gauge replacements or upgrades. They can also be used in automotive and RV applications as additional instrument clusters.

Units are capable of displaying multiple functions including digital tachometer, RPM, MPH, engine temperature, manifold temperature, exhaust temperature, oil pressure, water pressure, volts, amps, MAP, fuel level, battery charge, **and more** - all in a single multi-function gauge cluster.

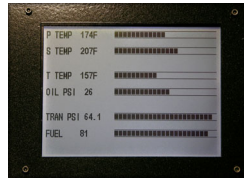
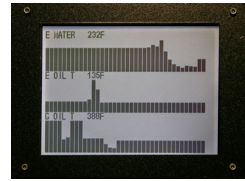
All sender/sensor inputs are programmable to match existing equipment. No need to replace senders. High/Low alarms are programmable for each sensor. Pick and choose your own sender combinations. Unique customizable calibration tables are available for all types of senders and can be downloaded to unit using serial or wireless interface. Simply modify a text file to suit your sensor application. Units can be configured for most standard automotive and marine senders.

NMEA 0183 RS232 and Bluetooth wireless interfaces are available to attach to PC/Laptop/PDA for real-time viewing and data logging of gauge reading. View and log sensor inputs from outside your car/boat in real-time.

Units are stock with 3 temperature inputs, 2 voltage inputs, 2 pressure inputs, Fuel input, and 2 pulse inputs. Other configurations are available.

Units have 6 different graphic display modes -

- **Data Display** - Values are displayed with Text labels and digital readouts. Up to 12 can be chosen for each of 8 possible groups.
- **Histogram Display** - Sensor value is displayed with Text Label and digital readout along with a 64-bar Histogram that tracks values over user configured time interval from 15 seconds to several hours. Great for showing trends.
- **Bar Graph Display** - Sensor labels and values are displayed with a 24 segment Bar Graph from Min to Max. Up to 6 can be chosen for each of 8 possible groups. Great for comparing different sensors side-by-side.
- **Digital Gauge Display** - Sensor labels and values are displayed with a dial gauge with 8 segments from Min to Max. Up to 12 can be chosen for each of 8 possible display groups. Great for comparing different sensors side-by-side.
- **Large Dial Display** - Ideal for RPM and MPH display. Include digital readout and graphic fill around perimeter. Up to two can be chosen per display page.


**Digital Dial Mode**

**Bar Graph Mode**

**Histogram Mode**

**Digital Data Mode**

### Specifications

| FEATURE                | GAUGE-G12  | GAUGE-G8   | GAUGE-X4   | GAUGE-X2   |
|------------------------|--|--|--|--|
| Display type           | LCD / LED Backlight  | VFD  | LCD  | LCD or VFD   |
| Display resolution     | 320X240  | 256X128  | 20X4 characters  | 24X2 characters  |
| Display lines          | (6 or 12) by 40  | (8 or 16) by 24  | 4 by 2   | 2 by 2   |
| Gauge display pages    | 8  | 8  | 8  | 8  |
| MAX Gauges per Page    | 12   | 16   | 8  | 4  |
| Gauge Modes            | 6<br>Text, Small text, Dial,<br>Large Dial, Bar graph,<br>Histogram,   | 8<br>Text, Small text,<br>Large text, Dial,<br>Large Dial, Bar<br>graph, Histogram,                                  | 4<br>Text, Dial, Bar<br>graph, Histogram   | 4<br>Text, Dial, Bar<br>graph, Histogram   |
| Bar Graph resolution   | 24   | 128  | 16   | 12   |
| Histogram resolution   | 40X64  | 128X64   | 10X16  | 12X8   |
| Display update rate    | 2 per sec  | 2 per sec  | 2 per sec  | 2 per sec  |
| NMEA update rate       | 16 per sec   | 16 per sec   | 16 per sec   | 16 per sec   |
| Analog Inputs          | 8  | 8  | 8  | 8  |
| Pulse Inputs           | 2  | 2  | 2  | 2  |
| NMEA Inputs            | 8  | 8  | 8  | 8  |
| NMEA Outputs           | 16   | 16   | 16   | 16   |
| Serial Ports           | 2  | 2  | 2  | 1  |
| Input types            | Temp 0-400°F, Temp<br>80°-2500°F, PS I 0-<br>150, Volt 0-30, Amp<br>+/-100, Fuel Level 10-<br>230 OHM, Pulse 0-<br>12V | Temp 0-400°F,<br>Temp 80°-2500°F,<br>PS I 0-150, Volt 0-<br>30, Amp +/-100, Fuel<br>Level 10-230 OHM,<br>Pulse 0-12V | Temp 0-400°F,<br>Temp 80°-2500°F,<br>PS I 0-150, Volt 0-<br>30, Amp +/-100, Fuel<br>Level 10-230 OHM,<br>Pulse 0-12V | Temp 0-400°F,<br>Temp 80°-2500°F,<br>PS I 0-150, Volt 0-<br>30, Amp +/-100,<br>Fuel Level 10-230<br>OHM, Pulse 0-12V |
| Alarms High/Low        | 8  | 8  | 8  | 8  |
| Calibration Tables     | 8  | 8  | 8  | 8  |
| Calibration resolution | 256 X 6 character  | 256 X 6 character  | 256 X 6 character  | 256 X 6 character  |
| Display Labels         | 16 X 8 character   | 16 X 8 character   | 16 X 8 character   | 16 X 8 character   |
| Power                  | 450 mA at 9V   | 850 mA at 9V   | 300mA at 12V   | 250 mA at 12V  |
| Case Dimension         | 7.0" X 6.0" X 1.5"   | 7.0" X 5.0" X 1.5"   | 7.0" X 5.0" X 1.5"   | 7.25" X 2.75" X 3"   |
| Module Dimension       | 5.75" X 4.6" X 1.6"  | 5.75" X 2.6" X 1.6"  | 5.75" X 2.6" X 1.6"  | -  |
| SMRP Case              | \$895  | \$895  | \$695  | \$395  |
| SMRP Module            | \$649  | \$649  | \$449  | -  |

\* Prices effective 11/2006. Prices and specifications subject to change

\* Copyright 2006 Chetco Digital Instruments, Inc. All rights reserved.