

24 function color digital gauge for car/RV/boat

Tach, Temp, Volt, Fuel, Oil, RPM, MPH, Amps, and more

- **User configurable touch screen instrument panel**
- **Huge 8.4" SUNLIGHT COLOR GRAPHIC LCD display**
- **Compact 9.8" X 7.95" X 1.87" flush mount aluminum enclosure**
- **Large 640 X 480 pixel format for dual engine installations**
- **Color alerts and Min/Max alarms for all inputs**
- **Separate Remote Sensor Unit simplifies in-dash wiring**
- **Remote switching option via touch screen buttons**
- **Field upgradeable from SD Flash memory card**
- **Only 1.87" thick - easily fits into dash**

Display up to 16 digital gauges and 8 digital switches on one virtual instrument panel. Use supplied PC software to create up to eight customized screens easily accessed via touch screen menus. Show from 1 to 24 **readings at a glance**. Chose from multiple color graphic display formats. 12 analog inputs (Temperature/Pressure/Volts/Fuel) and 2 pulse inputs (RPM/MPH) can be shown from attached remote sensor units located up to 150 feet away. Other options are available for NMEA 0183 and OBDII interfaces to display real-time ECM data in gauge formats. Attach additional remote sensor units for up to 32 functions.

vGauge G24N is capable of displaying multiple functions including digital tachometer, RPM, MPH, engine temperature, manifold temperature, exhaust temperature, oil pressure, water pressure, volts, amps, O2, MAP, fuel level, battery charge, **and more** - all in a single multi-function gauge cluster.

Ideal for gauge replacements or upgrades. This unit can also be used in boat, automotive and RV applications as additional instrument clusters.

Compact solid aluminum case is easy to flush mount in any location. Large touch sensitive color display provides viewing in sunlight and allows easy selection of gauges and switches. Programmable alarms use color and audio indicators to warn of damaging conditions. Full VGA panel can show dual engine instrumentation side-by-side on one screen.

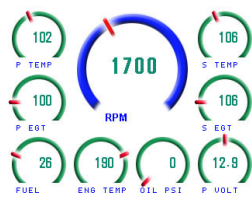
All sender/sensor inputs are programmable to match existing equipment. No need to replace senders. High/Low alarms are programmable for each sensor. Pick and choose your own sender combinations. Unique customizable calibration tables are available for all types of senders and can be downloaded to unit using serial or wireless interface. Simply modify a text file to suit you sensor application. Units can be configured for most standard automotive and marine senders.

All screen graphics and unit firmware be can updated in the field using SD Flash memory card. Just load new display graphics from PC and insert memory card for instant updates. Create your own custom gauge formats.

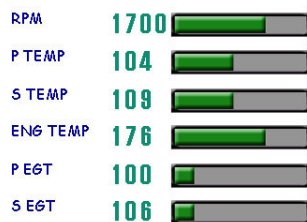
Up to 32 inputs when used with multiple vGauge-Remote sensor units. An additional 8/12 remote switches can also be controlled from touch menus with optional vSwitch module.

Units have 10 different graphic display modes -

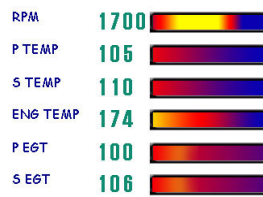
- **Data Display** - Values are displayed with Text labels and digital readouts. Up to 12 can be chosen for each of 8 possible display groups.
- **Histogram Display** - Sensor value is displayed with Text Label and digital readout along with a 64-bar Histogram that tracks values over user configured time interval from 15 seconds to several hours. Great for showing trends.
- **Bar Graph Display** - Sensor labels and values are displayed with a 24 segment Bar Graph from Min to Max. Up to 6 can be chosen for each of 8 possible groups. Great for comparing different sensors side-by-side.
- **Digital Gauge Display** - Sensor labels and values are displayed with a dial gauge with 8 segments from Min to Max. Up to 12 can be chosen for each of 8 possible display groups. Great for comparing different sensors side-by-side.
- **Large Dial Display** – Ideal for RPM and MPH display. Include digital readout and graphic fill around perimeter. Up to 6 can chosen per display page.



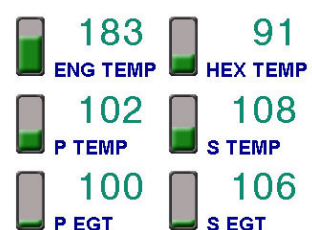
Digital Dial Mode



Bar Graph Mode



Histogram Mode



Digital Data Mode

Specifications

FEATURE	vGAUGE-G12C	vGAUGE-G12N	vGAUGE-G18S	vGAUGE-G24N
Display type	5.7" Color touch LCD	4" Color touch LCD	4.3" Color touch LCD	8.4" Color touch LCD
Display resolution	320X240	320X240	480X272	640X480
Gauge Layout	4 columns by 3/6 rows	4 columns by 3/6 rows	6 columns by 3/6 rows	8 columns by 6/12 rows
Gauge Pages	8	8	8	8
MAX Gauges per Page	12	12	18	24
Gauge Display Modes	10	10	10	10
	Text, Small text, Dial, Large Dial, Bar graph, Histogram, Bar text	Text, Small text, Dial, Large Dial, Bar graph, Histogram, Bar text	Text, Small text, Dial, Large Dial, Bar graph, Histogram, Bar text	Text, Small text, Dial, Large Dial, Bar graph, Histogram, Bar text
Bar Graph resolution	24	24	24	24
Histogram resolution	256X128	40X64	40X64	40X64
Display update rate	2 per sec	2 per sec	2 per sec	2 per sec
NMEA update rate	16 per sec	16 per sec	16 per sec	16 per sec
Analog Inputs ¹	12	12	12	12
Pulse Inputs ¹	3	3	3	3
NMEA Inputs	16	16	16	16
NMEA Outputs	16	16	16	16
Remote Switch ²	8	8	12	16
Ports	1 Serial / 1 USB	1 Serial / 1 USB	1 Serial / 1 USB	2 Serial
Input types ¹	Temp 0-400°F, Temp 80°-2500°F, PS I 0-150, Volt 0-30, Amp +/-100, Fuel Level 10-230 OHM, Pulse 0-12V	Temp 0-400°F, Temp 80°-2500°F, PS I 0-150, Volt 0-30, Amp +/-100, Fuel Level 10-230 OHM, Pulse 0-12V	Temp 0-400°F, Temp 80°-2500°F, PS I 0-150, Volt 0-30, Amp +/-100, Fuel Level 10-230 OHM, Pulse 0-12V	Temp 0-400°F, Temp 80°-2500°F, PS I 0-150, Volt 0-30, Amp +/-100, Fuel Level 10-230 OHM, Pulse 0-12V
Alarms High/Low	16	16	16	16
Calibration Tables	16	16	16	16
Calibration resolution	256 X 6 character	256 X 6 character	256 X 6 character	256 X 6 character
Display Labels	16 X 8 character	16 X 8 character	16 X 8 character	16 X 8 character
Firmware Update	USB	USB	USB	SD Flash Card
Power	850 mA at 5V	650 mA at 12V	480 mA at 5V	1120 mA at 12V
Case Dimension	7.5" X 6.5" X 2.5"	5.5" X 4.5" X 1.5"	7.5" X 6.5" X 2.5"	4.5" X 3.6" X 1.3"
Case Type	Painted CNC Aluminum	NMEA 4 Flush Mount	ABS Plastic Pedestal	NMEA 4 Flush Mount

1) When used with vGauge-Remote sensor unit

2) When used with optional vSwitch module

* Prices effective 09/2008. Prices and specifications subject to change

* Copyright 2008 Chetco Digital Instruments, Inc. All rights reserved.